

MeiG-SLM926

Multi-mode Smart LTE Module

Support Wi-Fi & BT



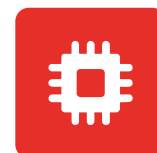
SLM926 series module adopts Qualcomm Snapdragon 400 series QCM4290 (SM6115), which is an 11nm FinFET process CPU with built-in 64bit ARM, 4*A73 2.0GHz+4*A53 1.8GHz. It supports Decode/encode up to 1080P@60fps, H.265, FHD+ screen resolution, triple ISP camera, Android 12 OS, support board memory of 3GB+32GB (2GB+16GB, 4GB+64GB). It supports LTE Cat6, with a max downlink rate up to 300Mbps and a max uplink rate up to 50Mbps. It supports multiple network standards including TD-LTE/FDD-LTE/WCDMA/EVDO/TD-SCDMA/CDMA/GSM, integrated L1+L5 dual-band GNSS, 2.4&5G WIFI and BT5.1.

SLM926 series modules include: SLM926-C, SLM926-E, SLM926-A*, SLM926-LA*, SLM926-J*, SLM926-AU*, SNM926.

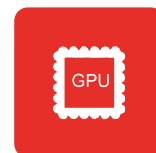
SLM926 support functions including voice, SMS, address book, 2.4G/5G WiFi, BT and GPS. It supports dual 13 million 3D cameras or depth-of-field photography, and can be widely used in video recorders, smart POS cash registers, logistics terminals, VR cameras, intelligent robots, security, automotive equipment, intelligent information collection devices, intelligent handheld terminals, drones and other products.

Main Advantages

- ✓ LTE Cat 6 & 2x20MHz CA
Max DL rate can reach 300Mbps
- ✓ Comprehensive coverage of various network standards
- ✓ Main Screen FHD+ (2520*1080) 60fps
- ✓ Support 3*ISP, 2 or 3*cameras
- ✓ L1+L5 dual frequency GNSS,
fast and accurate positioning in different environments
- ✓ 1080P @60fps video recording and playing



Qualcomm8*
A73, 2.0GHz



Qualcomm
Adreno 610



Android 12



Cat6
300Mbps(DL)
50Mbps(UL)



BT 5.1
(BR/DDR+BLE)



IEEE 802 11
a/b/g/n/ac



L1+L5



H.265, VP9

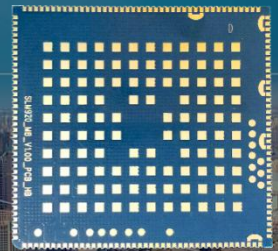


LCC+LGA

MeiG-SLM926

Multi-mode Smart LTE Module

Support Wi-Fi & BT



China/India

SLM926-C:

LTE FDD: B1/B3/B5/B8

LTE TDD: B34/B38/B39/B40/B41

WCDMA: B1/B8

TD-SCDMA: B34/B39

EVDO/CDMA: BC0

GSM: 900/1800MHz

Europe/Middle/East Africa/Korea/Thailand

SLM926-E:

LTE FDD: B1/B3/B5/B7/B8/B20/B28

LTE TDD: B38/B40/B41

WCDMA: B1/B5/B8

GSM: 850/900/1800MHz

North America

SLM926-A*:

LTE FDD: B2/B4/B5/B7/B12/B13/B17/B25/B26/B66

WCDMA: B2/B4/B5/B8

GSM: 850/1900MHz

Australia/Taiwan/Brazil

SLM926-AU*:

LTE FDD: B1/B3/B5/B7/B8/B28

LTE TDD: B40

WCDMA: B1/B5/B8

GSM: 850/900/1800MHz

Japan

SLM926-J*:

LTE FDD: B1/B3/B8/B18/B19/B26

LTE TDD: B41

WCDMA: B1/B6/B8/B19

Latin America

SLM926-LA*

LTE-FDD: B2/B4/B5/B7/B8/B25/B28/B66

LTE TDD: B40

WCDMA: B2/B5/B8

GSM: 850/900/1900MHz

Global

SNM926

Only support Wi-Fi & BT

Features

LTE:

Cat 4 FDD: 300Mbps (DL)/50Mbps (UL)

Cat 4 TDD: 265Mbps (DL)/35Mbps (UL)

UMTS:

DC-USDPA: 42Mbps (DL)

HSUPA: 5.76Mbps (UL)

WCDMA: 384Kbps (DL/UL)

TD-SCDMA:

4.2Mbps (DL)/2.2Mbps (UL)

CDMA2000:

EVDO: 3.1Mbps (DL)/1.8Mbps (UL)

1X Advanced: 307.2Kbps (DL/UL)

GSM:

GPRS: 107Kbps (DL)/85.6Kbps (UL)

EDGE: 236.8Kbps (DL)/236.8Kbps (UL)

Electrical Parameters

Supply voltage: 3.55V~4.4V, typical value: 3.8V

Output Power:

Class 4 (33dBm±2dB) for GSM850

Class 4 (33dBm±2dB) for EGSM900

Class 1 (30dBm±2dB) for DCS1800

Class 1 (30dBm±2dB) for PCS1900

Class E2 (27dBm±3dB) for GSM850 8-PSK

Class E2 (27dBm±3dB) for EGSM900 8-PSK

Class E2 (26dBm±3dB) for DCS1800 8-PSK

Class E2 (26dBm±3dB) for PCS1900 8-PSK

Class 3 (24dBm+1/-3dB) for WCDMA bands

Class 3 (24dBm+3/-1dB) for EVDO/CDMA BC0

Class 2 (24dBm+1/-3dB) for TD-SCDMA bands

Class 3 (23dBm±2dB) for LTE-FDD bands

Class 3 (23dBm±2dB) for LTE-TDD bands

Sensitivity :

LTE FDD B1: -102dBm LTE FDD B3: -102dBm

LTE FDD B5: -102dBm LTE FDD B8: -102dBm

LTE TDD B34: -101dBm LTE TDD B38: -102dBm

LTE TDD B39: -102dBm LTE TDD B40: -102dBm

LTE TDD B41: -102dBm WCDMA B1: -110dBm

WCDMA B8: -110dBm TD-SCDMA B34: -109dBm

TD-SCDMA B39: -109dBm

EVDO/CDMA BC0: -109dBm

EGSM900: -109dBm

DCS1800: -109dBm

Audio & Video

Support VoLTE Ultra HD voice calls, SRVCC/

CSFB voice fallback technology

24-bit/192kHz High fidelity music playback

Video codec: 4K@60fps

Wi-Fi video: codec 1080P @30fps

Interfaces

LCM Interface

4-lane MIPI_DSI, FHD+(2520*1080) @60fps

Camera Interfaces: 3*ISP

Main Camera: 4-lane MIPI_CSI;

Auxiliary Camera: 4-lane MIPI_CSI ;

Max rate: 2.1Gbps/Lane;

(13+13+5MP), (25+5MP), (13+13MP) @30fps

or (16+16MP)@ 24fps

Touch screen interface: capacitive touch screen.

Audio Interfaces:

Analog audio: speaker, receiver, earphone, 3 sets of microphones

1 set of noise reduction microphones

USB Interfaces:

Conform to USB 3.0, Support USB OTG

Antenna Interfaces:

main antenna, diversity antenna, GNSS antenna, Wi-Fi & BT antenna

Other Interfaces

I2C: x5

(U)SIM: x2 (1.8V/2.95V)

UART: x3 (support HW flow control, MAX 4Mbps)

SD card: x1 (support SD 3.0, 4-bit SDIO)

PWRKEY: 1.8V, Internal pull-up

SPI: x2 (1 multiplexed for UART; 1 multiplexed for I2S, I2S supports Tx & Rx)

ADC: x2

GPIO: x19

Motor drive: x1

Flashlight: x2

LED: x4

Outstanding Features

WLAN: 2.4G/5G, 802.11 a/b/g/n/ac

BT: BT2.1+EDR/3.0/4.1 LE/4.2 BLE, BT5.1

GNSS: GPS/GLONASS/BeiDou

LTE Cat4

LTE Cat6, support 2x20MHz carrier aggregation

Support diversity receiving antenna, DL MIMO 2x2

Bandwidth: 1.4/3/5/10/15/20MHz

Built-in charging chip and electricity meter

Support Dual Sim Dual Standby

Firmware update via USB

General Features

OS: Android 12

Storage:

32GB eMMC+3GB LPDDR4 (default)

16GB eMMC+2GB LPDDR4 (optional)

64GB eMMC+4GB LPDDR4 (optional)

Working Temperature: -30°C ~ +75°C

Storage Temperature: -40°C ~ +90°C

Supply voltage: 3.55V~4.4V, typical value: 3.8V

Module Size: 41.0mm × 45.5mm × 3.00mm

Package: LCC+LGA

Weight: about 13.0g

Certifications

CCC* (China)

* means developing