

MeiG-SLM925

Multi-Mode LTE Smart Module

Support Wi-Fi & BT



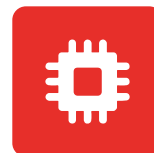
MeiG Smart SLM925 adopts Qualcomm snapdragon QCM6125 platform with 11nm FinFET process, built-in 64bit ARM(4*A73 2.0GHz+4*A53 1.8GHz). SLM925 supports 4K@30fps video encoding/decoding, H.265 running Android 10 operating system, built-in on-board memory 4GB+64GB(6GB+64GB, 6GB+128GB). It integrates GNSS and 2.4&5G WiFi, supports LTE Cat.6, 2*20MHz CA and multi-modes of connectivity including TD-LTE/ FDD-LTE/WCDMA/ EVDO/ TD-SCDMA/ CDMA/ GSM.

SLM925 series modules support the following markets: SLM925-C, SLM925-E, SLM925-A*, SLM925-LA*, SLM925-J*, SLM925-AU*, SNM925.

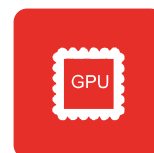
SLM925 integrates rich functional interfaces, including LCM, touch panel, camera, UART, USB, I2C, SPI and so on. It can provide functions such as voice, SMS, address book, 2.4G/5G WiFi, BT and GPS, support dual 1600W 3D or DoP camera, which can be widely used in video recorder, intelligent POS cash registers, logistics terminals, VR Camera, intelligent robots, video surveillance, security surveillance, automotive equipment, intelligent information collection equipment, intelligent handheld terminals, UAV and other products.

Main Advantage:

- ✓ Support LTE Cat6 and 2*20MHz CA with maximum DL rate up to 300Mbps
- ✓ Full coverage of all network standards
- ✓ Support dual screen and touch panel, 1920*1200@60fps
- ✓ Support 2xISP (16+16MP), 4 x Camera
- ✓ Integrated multi-constellation GNSS for fast and accurate positioning in different environments
- ✓ Support 4K@30fps encode/decode



Octa-core
Kryo260



Adreno™ 610



Android 10



CAT.6
Max 300Mbps(DL) (BR/DDR+BLE)
Max 50Mbps(UL)



BT 5.X



IEEE 802.11
a/b/g/n/ac



GPS+BeiDou+
GLONASS



H.265/
VP9/MPEG

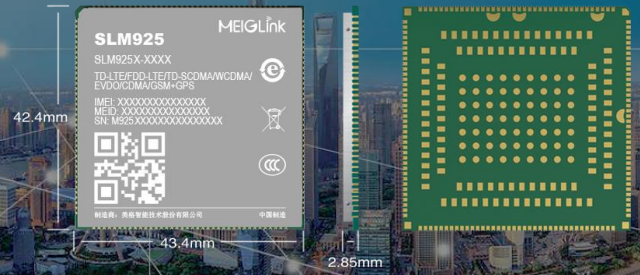


LCC+LGA

MeiG-SLM925

Multi-Mode LTE Smart Module

Support Wi-Fi & BT



Frequency Band

SLM925-C

LTE FDD: B1/B3/B5/B8
LTE TDD: B34/B38/B39/B40/B41
WCDMA: B1/B8
TD-SCDMA: B34/B39
EVDO/CDMA: BC0
GSM: 900/1800MHz

SLM925-E

LTE FDD: B1/B3/B5/B7/B8/B20
LTE TDD: B38/B40/B41
WCDMA: B1/B5/B8
GSM: 850/900/1800MHz

SLM925-A*

LTE FDD: B2/B4/B5/B7/B12/B13/B14/B25/B26
LTE TDD: B41
WCDMA: B1/B2/B4/B5
GSM: 850/1900MHz

SLM925-AU*

LTE FDD: B1/B3/B5/B7/B8/B28
LTE TDD: B40
WCDMA: B1/B2/B5/B8
GSM: 850/900/1800/1900MHz

SLM925-J*

LTE FDD: B1/B3/B8/B18/B19/B26
LTE TDD: B41
WCDMA: B1/B6/B8/B9

SLM925-LA*

LTE FDD: B2/B4/B5/B7/B8/B28
LTE TDD: B40
WCDMA: B2/B5/B8
GSM: 850/900/1900MHz

SNM925

WIFI & BT only

Data Feature

LTE

Cat 6 FDD: max 300Mbps(DL)/50Mbps(UL)
Cat 6 TDD: max 265Mbps(DL)/35Mbps(UL)

UMTS

DC-USDPA: max 42Mbps(DL)
DC-HSUPA: max 11.2Mbps(UL)
WCDMA: max 384Kbps(DL/UL)
TD-SCDMA: max 4.2Mbps(DL)/2.2Mbps(UL)

CDMA2000

EVDO: max 3.1Mbps(DL)/1.8Mbps(UL)
1X Advanced: max 307.2Kbps(DL/UL)

GSM

GPRS: max 107Kbps(DL)/85.6Kbps(UL)
EDGE: max 296Kbps(DL)/236.8Kbps(UL)

Electrical Parameter

Work voltage: 3.5V~4.35V, typical value 3.8V
Power consumption: 70uA@shutdown
3.6mA@dormancy

Transmission Power

Class 4 (33dBm±2dB) for GSM850
Class 4 (33dBm±2dB) for EGSM900
Class 1 (30dBm±2dB) for DCS1800
Class 1 (30dBm±2dB) for PCS1900
Class E2 (27dBm±3dB) for GSM850 8-PSK
Class E2 (27dBm±3dB) for EGSM900 8-PSK
Class E2 (26dBm±3dB) for DCS1800 8-PSK
Class E2 (26dBm±3dB) for PCS1900 8-PSK
Class 3 (24dBm+1/-3dB) for WCDMA bands
Class 3 (24dBm+3/-1dB) for EVDO/CDMA BC0
Class 2 (24dBm+1/-3dB) for TD-SCDMA bands
Class 3 (23dBm±2dB) for LTE-FDD bands
Class 3 (23dBm±2dB) for LTE-TDD bands

Sensitivity

LTE FDD B1: -102dBm LTE FDD B3: -102dBm
LTE FDD B5: -102dBm LTE FDD B8: -102dBm
LTE TDD B34: -101dBm LTE TDD B38: -102dBm
LTE TDD B39: -102dBm LTE TDD B40: -102dBm
LTE TDD B41: -102dBm WCDMA B1: -110dBm
WCDMA B8: -110dBm TD-SCDMA B34: -109dBm
TD-SCDMA B39: -109dBm
EVDO/CDMA BC0: -109dBm
EGSM900: -109dBm
DCS1800: -109dBm

Audio & Video

Support VoLTE Ultra HD voice calls SRVCC/CSFB
voice fallback technology
24-bit/192kHz high fidelity music playback
Video codec:
• En/decode: 4K@60fps
• Concurrency: 1080p@30fps

Display Interface

1x 4-lane MIPI_DSI + 1x Display Port
1920x1200@60fps + 1920x 1200@60fps

Camera Interface

3x 4-lane MIPI_CSI, the highest rate is 2.1Gbps/lane
Support 3 or 4 cameras, dual ISP
Support 24M
Touch Screen Interface: Capacitive touch screen

USB Interface

1*USB 3.1, (compatible with USB 2.0)
Conform USB 3.0/2.0 standard, support USB OTG
I2C interface: 5
UART interface: 3 (support HW flow control, max 4Mbps)
SPI interface: 2 (Multiplex pin with UART/I2S)
(U)SIM interface: 2 (1.8V/2.95V)
SD card interface: 1 (support SD 3.0, 4-bit SDIO)
PWRKEY: 1.8V, internal pull-up
ADC interface: 2
GPIO interface: 19
Motor driver interface: 1
Flashlight interface: 2
LED interface: 4
Antenna: 1*main antenna, 1*diversity antenna,
1*GNSS antenna, 1*Wi-Fi/BT(2.4G+5G)

Outstanding Feature

WIFI: 2.4G/5G, 802.11 a/b/g/n/ac
BT: BT2.1+EDR/3.0/4.1LE/5.X BLE
GNSS: GPS/GLONASS/BeiDou
LTE Cat6, Support 2X20MHz CA
Support 3GPP E-UTRA Release 12
Bandwidth: 1.4/3/5/10/15/20MHz
Support dual screen
Support DSDD
Firmware update via USB

General Feature

OS: Android 10
Storage:
64GB UFS + 4GB LPDDR4x(default)
64GB UFS + 6GB LPDDR4x (option)
128GB UFS + 6GB LPDDR4x (option)

Working temperature range: -30°C ~ +75°C
Extended temperature range: -40°C ~ +85°C
Storage temperature range: -40°C ~ +90°C
Working voltage: 3.5V~4.35V(typical value: 3.8V)
Module size: 43.0mm × 44.0mm × 2.85mm
Package: LCC + LGA
Weight: ~13.0g

Certification

CCC

* means in developing